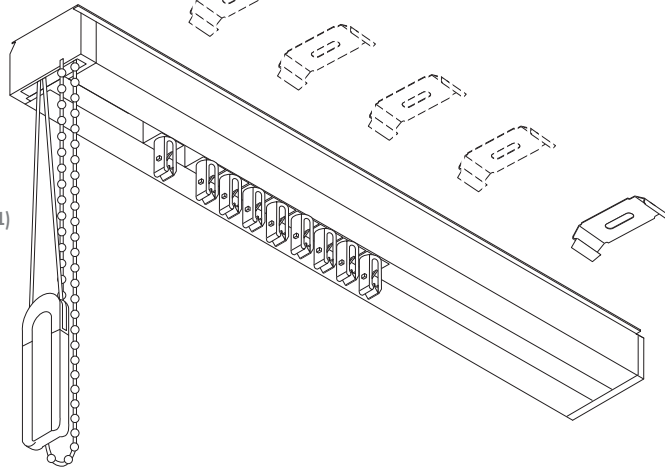
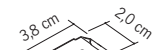
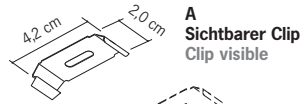


# Lamellenvorhang L1 / LS (Slope)

## Store à lamelles L1 / LS (Slope)



### Montagezubehör

Das beiliegende Befestigungsmaterial gilt nur für feste Untergründe. Für die Montage haftet der Montierende.

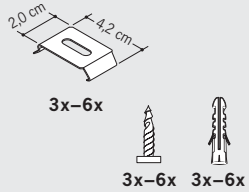
### Accessoires de montage

Le matériel de fixation joint ne peut être appliqué que sur des bases solides. La personne chargée du montage est responsable du montage.

Montagepunkte bestimmen  
Déterminer les points de montage

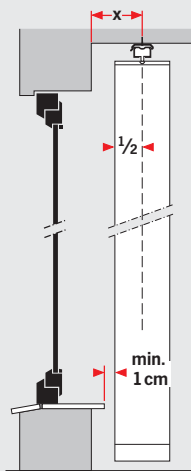
### A Sichtbarer Clip

Clip visible



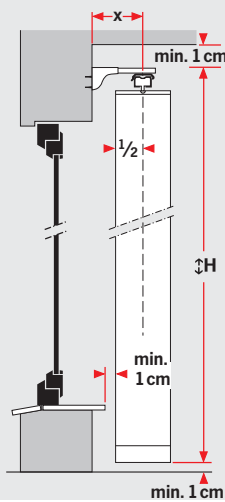
### Deckenmontage

Montage au plafond

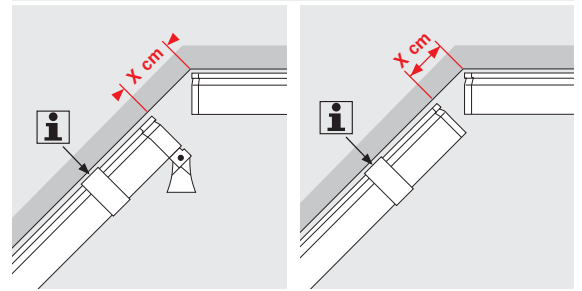
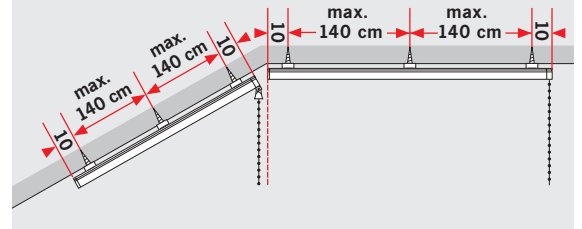


### Wandmontage

Montage au mural



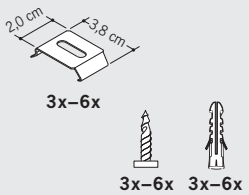
### LS (Slope)



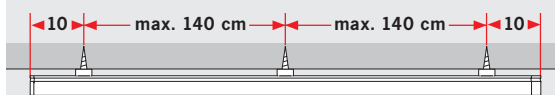
Montagemaß X individuell errechnet – siehe Aufkleber Oberkopf  
La cote de pose X est calculée au cas par cas – voir l'étiquette sur la saillie du haut

### B Optional Verdeckter Clip

Options Clip invisible



### L1

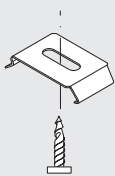


### Montage

Montage

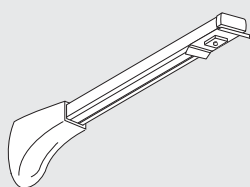
### 1 Deckenmontage

Montage au plafond



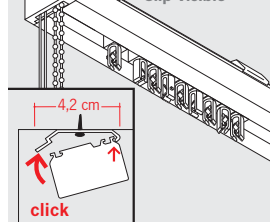
### Wandmontage

Montage au mural



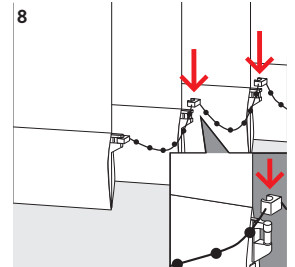
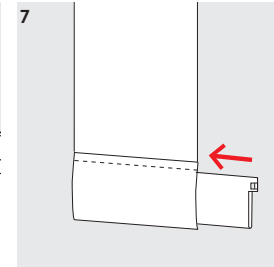
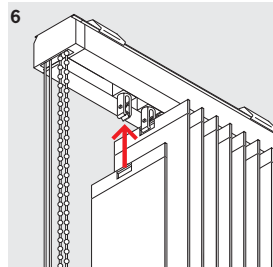
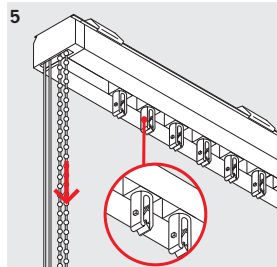
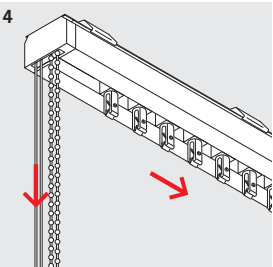
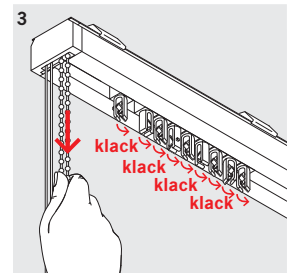
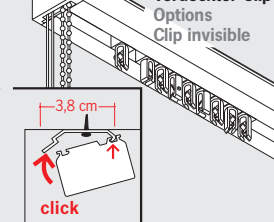
### 2A Sichtbarer Clip

Clip visible

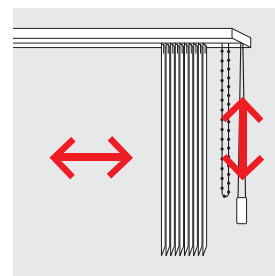
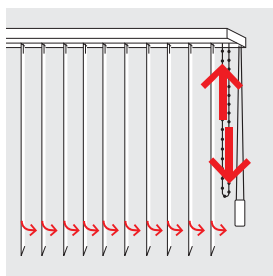
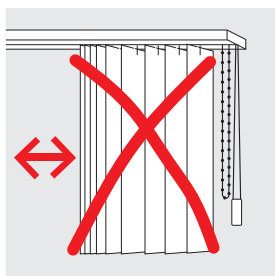


### B Optional Verdeckter Clip

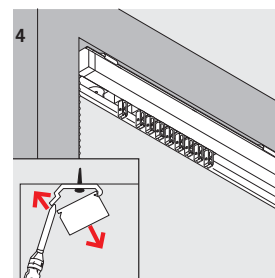
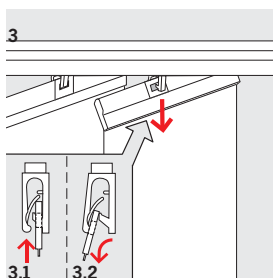
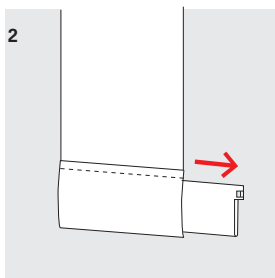
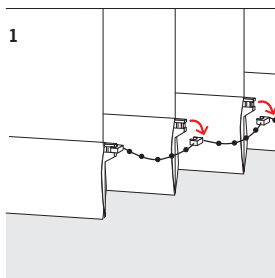
Options Clip invisible



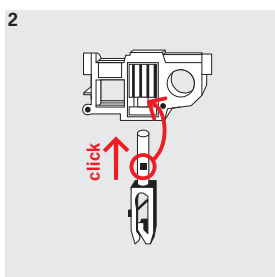
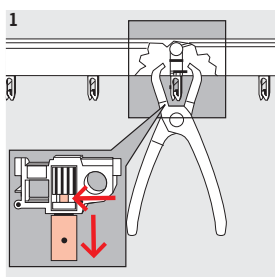
Öffnen und Schließen  
Ouvrir et fermer



Demontage  
Démontage

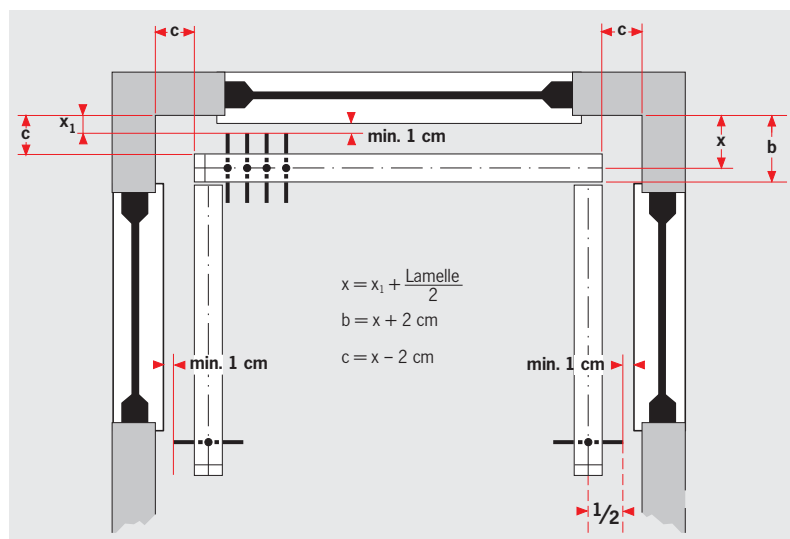


Auswechselbare Haken  
(mit Spezialzange)  
Crochets interchangeables  
(avec pince spéciale)



Erkeranlagen:  
Installations à encorbellement:

Montage  
Montage



## Achtung:

- Kleine Kinder können sich in den Schlingen von Schnüren, Ketten oder Gurten zum Ziehen sowie Schnüre zur Betätigung von Fensterabdeckungen strangulieren. Sie können sich ebenfalls Schnüre um den Hals wickeln.
- Schnüre sind aus der Reichweite von Kindern zu halten, um Strangulierung und Verwicklung zu vermeiden.
- Betten, Kinderbetten und Möbel sind entfernt von Schnüren für Fensterabdeckungen aufzustellen.

## Attention:

- Les enfants en bas âge peuvent s'étrangler avec les boucles, les cordons, les chaînes ou les sangles à tirer et à serrer qui servent à commander les revêtements de fenêtres. Ils peuvent également s'enrouler les cordons autour du cou.
- Maintenez les cordons hors de la portée des enfants pour éviter toute strangulation et tout enchevêtrement.
- Posez les lits, les lits d'enfant et les meubles loin des cordons des revêtements de fenêtres.

